



國立彰化師範大學  
National Changhua University of Education



## REGISTRATION INFO.



# 2022 NCUE ONLINE SUMMER CAMP

Culture & Mandarin Learning Program  
in Taiwan

Program Dates:

BATCH 1: 8th August – 12th August

BATCH 2: 15th August – 19th August

(Each batch limited to 15 students)

歡迎大家一起學中文  
huān yíng dà jiā yì qǐ xué zhōng wén



Prospective Students:

The students who are over 18 years old and interested in learning Mandarin and Taiwanese culture  
(Never learned Mandarin before)

Tuition Fees: Free for partner university  
\* The student from partner universities should submit credit card authorization as a deposit (NT\$ 3800/USD\$136)

Application Period:

21st June–20th July, 2022

## PREPARATION

Platform

- Google Meet:  
<https://meet.google.com/?authuser=2>
- Instructions:  
<https://support.google.com/meet/authuser=2#topic=7306097>



# REGISTRATION STEPS

- 1 Fill out the application form and sign the letter of declaration. Then submit both to [incoming@cc2.ncue.edu.tw](mailto:incoming@cc2.ncue.edu.tw) ( Ms. Yu-Chen Chang)
- 2 Upon acceptance of an application by NCUE for 2022 NCUE SUMMER CAMP, a payment request will be sent to the applicant by email in 5 business days.
- 3 Make a payment by filling out the Credit Card Authorization Form and email to [incoming@cc2.ncue.edu.tw](mailto:incoming@cc2.ncue.edu.tw) in 5 business days.
- 4 Once the payment has been received, a letter of confirmation will be sent to the applicant by email in 5 business days.

Applications are NOT considered complete until the process has been fulfilled. You need to wait until receiving the confirmation email.

## IMPORTANT NOTES

The payment must be made in the full amount in NTD, free of any deductions or withholdings, and without exercising any right of set-off.

Please note that the remittance fee charged by the bank shall be borne by the applicant

The student from partner universities should submit credit card authorization as a deposit



# 2022 ONLINE SUMMER CAMP TENTATIVE SCHEDULE



Asia Time  
GMT+8  
(15:00-17:30)  
Europe Time  
GMT+2  
(9:00-11:30)

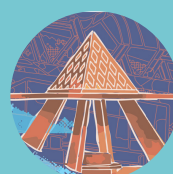
8/8

MONDAY

Orientation  
(30 mins)



NCUE  
Introduction  
(30 mins)



NCUE  
International  
Ambassador  
Time  
(30 mins)



8/9

TUESDAY

Mandarin  
Course  
(2 hrs 30mins)



學 中 文  
xué zhōng wén

8/10

WEDNESDAY

Taiwan Lion  
Craftsman  
(Craft)  
(1 hour)



Online  
Cultural Trip  
Lugang Town  
(1 hour)



8/11

THURSDAY

Mandarin  
Course  
(2 hrs 30mins)



學 中 文  
xué zhōng wén

8/12

FRIDAY

Introduction  
of  
Indigenous  
language  
in  
Taiwan  
(1hr30mins)



How Can I  
Continue to  
Study at  
NCUE?  
(30 mins)



- A 10-min break every hour
- The material of Taiwan Lion craftsman will be sent to you before the summer camp start.

# 2022 ONLINE SUMMER CAMP TENTATIVE SCHEDULE



Asia Time  
GMT+8  
(15:00-17:30)  
Europe Time  
GMT+2  
(9:00-11:30)

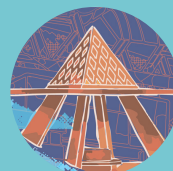
8/15

MONDAY

Orientation  
(30 mins)



NCUE  
Introduction  
(30 mins)



NCUE  
International  
Ambassador  
Time  
(30 mins)



8/16

TUESDAY

Mandarin  
Course  
(2 hrs 30mins)



學 中 文  
xué zhōng wén

8/17

WEDNESDAY

Taiwan Lion  
Craftsman  
(Craft)  
(1 hour)



Online  
Cultural Trip  
Lugang Town  
(1 hour)



8/18

THURSDAY

Mandarin  
Course  
(2 hrs 30mins)



學 中 文  
xué zhōng wén

8/19

FRIDAY

Introduction  
of  
Indigenous  
language  
in  
Taiwan  
(1hr30mins)



How Can I  
Continue to  
Study at  
NCUE?  
(30 mins)



- A 10-min break every hour
- The material of Taiwan Lion craftsman will be sent to you before the summer camp start.

# Time Zone

GMT+7  
(14:00-16:30)

Indonesia 印尼  
Vietnam 越南  
Thailand 泰國

GMT+8  
(15:00-17:30)

Taiwan 台灣



GMT+9  
(16:00-18:30)

Japan 日本  
South Korea 韓國

GMT+2  
(9:00-11:30)

France 法國  
Germany 德國  
Spain 西班牙

GMT+1  
(8:00-10:30)

United Kingdom  
英國

## information

- Program Coordinator:  
Ms. Yu-Chen, Chang
- Email: [incoming@cc2.ncue.edu.tw](mailto:incoming@cc2.ncue.edu.tw)
- Tel: +886-4-723-2105 ext. 5124
- Fax: +886-4-721-123

Welcome





國立彰化師範大學  
National Changhua University of Education



## ABOUT

### National Changhua University of Education

NCUE is situated at the foot of Bagua Mountain. The 51-hectare university consists of two scenic, serene, and spacious campuses, Jinde and Baoshan. It is one of the three prestigious national normal universities in Taiwan and the only national university in Changhua.

NCUE has been dedicated to the cultivation of a balanced program of teacher education, scholarly research, student development, and community service. The University employs a well-organized system for middle school teacher training and establishes contributors to various academic fields, such as education, art, science, technology, engineering, management, social sciences, and physical education.



Changhua City is located in Central Taiwan, a mixture of verdant natural scenery, vibrant modern metropolis and nostalgic cultural heritage. It is adjacent to Taiwan's second-largest metropolis, Taichung City, and is a transportation hub of Taiwan where the mountain-line and coast-line railways converge. The geological location provides considerable advantages in terms of industry-government-academia collaborations and cultural heritage development, making it an attractive place to visit.

